



Soti Christodoulou
072 311 8662
soti.christodoulou@harcourts.co.za

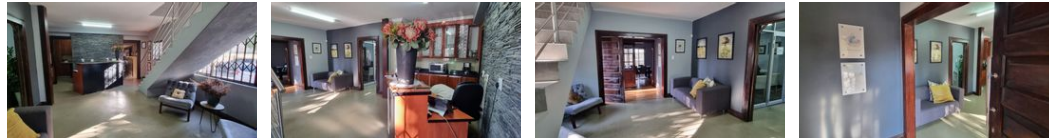
Contact Harcourts Capital

012 4604444

46 13th Street
Menlo Park
Pretoria
0081



Web Ref CL2110



R5,500,000

0 15

Excellent LOCATION, VISIBILITY and in super condition

Price excludes VAT

Established office premises situated off Garsfontein Road. Offers 11 very spacious rooms, 2 boardrooms, 2 reception areas, 5 cloakrooms, a kitchen area, storeroom and fully air-conditioned. Ample parking available.

Rates: R 2 772.00 per month.

You need to expand your office premises and relocate to a great location?

Features

Zoning Commercial

Interior
Air Conditioning Yes

Exterior
Security Yes
Open Parking Bays 15

Sizes
Floor Size 477m²
Land Size 1,445m²