



**Edward Hamer**  
084 533 9807  
edward.hamer@harcourts.co.za

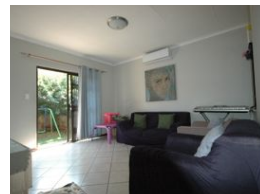
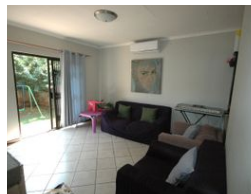
Contact Harcourts Capital

012 4604444

46 13th Street  
Menlo Park  
Pretoria  
0081



Web Ref RL40834



R1,050,000

2 1 1

**Monthly Bond Repayment** R10,837.98

Calculated over 20 years at 11% with no deposit.

**Transfer Costs** R32,749.00

**Bond Costs** R25,220.00

These calculations are only a guide. Please ask your conveyancer for exact calculations.

**Monthly Levy** R1,413

**Monthly Rates** R574

### Secure Country Living

Welcome to this stunning 2-bedroom simplex located in the highly sought-after Country View Estate in Pretoria. This charming property offers an exceptional blend of comfort, security, and a welcoming ambiance, making it the perfect choice for families, couples, or anyone seeking a tranquil lifestyle in one of Pretoria's most desirable areas, the ideal investment.

The thoughtfully designed layout maximizes space and functionality, creating an ideal setting for relaxation and entertaining. The open-plan living area flows effortlessly into a well-appointed kitchen, ready for all your culinary creations.

Safety is paramount, and this property ensures a secure living environment, so you can relax in your new home. Country View Estate is known for its friendly community and is equipped with comprehensive security measures to...

### Features

**Pets Allowed** Yes

#### Interior

Bedrooms	2
Bathrooms	1
Kitchens	1
Recep. Rooms	2
Furnished	No

#### Exterior

Garages	1
Carports / Parkings	1
Security	Yes
Pool	No
Views	False

#### Sizes

Floor Size	86m²
Land Size	5,669m²

#### Extras

24 Hour Response 24 Hour Access Air Conditioner Country Living Security Estate East Fibre Club House Play Park