



**Nicky Da Silva**  
084 456 2561  
nicky.dasilva@harcourts.co.za



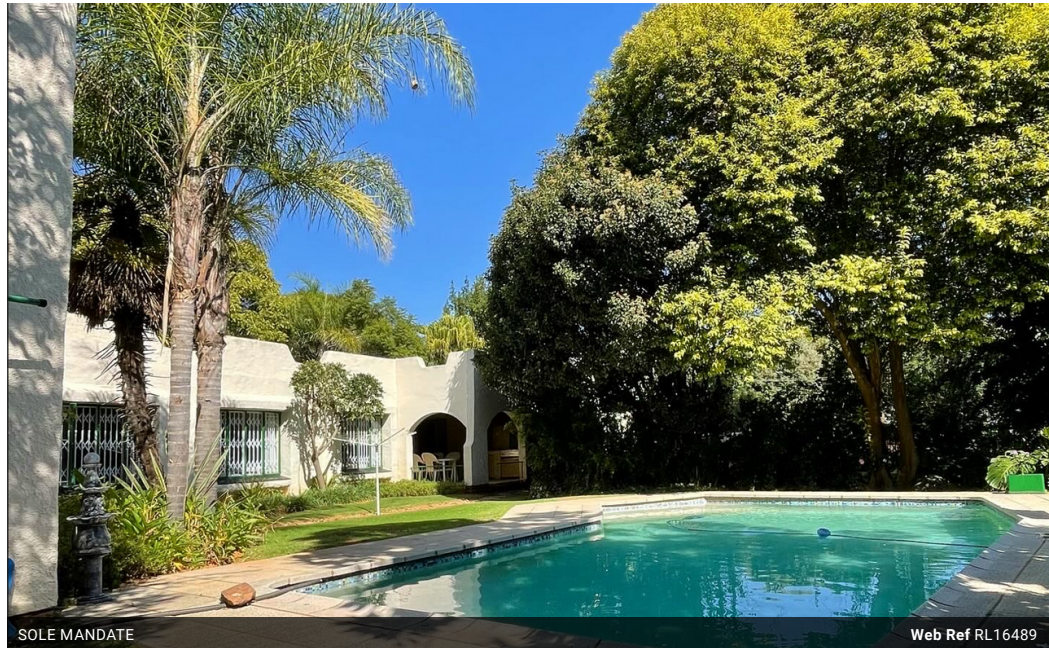
**Dennis Hamer**  
082 415 8547

dennis.h@harcourts.co.za

Contact Harcourts Capital

012 4604444

46 13th Street  
Menlo Park  
Pretoria  
0081



SOLE MANDATE

Web Ref RL16489



R3,200,000

**Monthly Bond Repayment** R32,487.33

Calculated over 20 years at 10.75% with no deposit.

**Transfer Costs** R184,379.00 **Bond Costs** R44,070.00

These calculations are only a guide. Please ask your conveyancer for exact calculations.

**Monthly Rates** R1,908

5 3 2

Spacious 5-bedroom house for sale in Erasmusrand, Pretoria - perfect for a growing family

This is a multi-generation living home with five bedrooms and 3 bathrooms. There is lovely living room with a gas fireplace for the cold winters. Original wooden beams offer an architectural feature throughout the house. The windows are protected by burglars' bars, of which some can open for a view on the lush garden. For the warm summers, you can open the double glass door leading from the living room to the undercover patio for relaxation and enjoy the luxury of a built-in gas braai while enjoying cooling off in the swimming pool. The dining room adds elegance to the house, and the study is a place where you can work in absolute peace and tranquility. The beautiful kitchen has its own laundry for convenience and leads to a courtyard, domestic quarters and the extra 70m2 workshop. The domestic quarters have a shower, toilet,...

### Features

|              |    |                     |       |            |         |
|--------------|----|---------------------|-------|------------|---------|
| Pets Allowed |    | Yes                 |       |            |         |
| Interior     |    | Exterior            |       | Sizes      |         |
| Bedrooms     | 5  | Garages             | 2     | Floor Size | 400m²   |
| Bathrooms    | 3  | Carports / Parkings | 4     | Land Size  | 2,012m² |
| Kitchens     | 1  | Security            | Yes   |            |         |
| Recep. Rooms | 3  | Dom. Accom.         | 1     |            |         |
| Studies      | 1  | Pool                | Yes   |            |         |
| Furnished    | No | Views               | False |            |         |

### Extras

close to school, shopping centres and easy access to the highways 5 bedroom home family home Fireplace wooden beams

