



Soti Christodoulou
072 311 8662
soti.christodoulou@harcourts.co.za

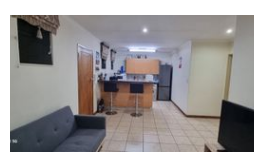
Contact Harcourts Capital

012 4604444

46 13th Street
Menlo Park
Pretoria
0081



Web Ref RL44416



R1,200,000

2 2

Monthly Bond Repayment R12,182.75

Calculated over 20 years at 10.75% with no deposit.

Transfer Costs R32,749.00 **Bond Costs** R25,220.00

These calculations are only a guide. Please ask your conveyancer for exact calculations.

Monthly Levy R3,086 **Monthly Rates** R844

Gorgeous North Facing Unit!

This property is located at The Circuits complex east of Jan Shoba.

It gives very easy access to both main campus and sport grounds of the University of Pretoria.

The complex is very popular amongst Students and Investors.

It is well managed and offers 24 hours security guards, ample visitors parking and communal geyser (Levy includes hot water)

The unit is in an excellent condition and comprises an openplan kitchen and lounge with 2 bedrooms, both en-suite.

A GOOD CHOICE and More!

Features

Interior

Bedrooms	2
Bathrooms	2
Kitchens	1
Recep. Rooms	1
Furnished	No

Extras

24 Hour Access

Exterior

Carports / Parkings	2
Security	Yes
Pool	No
Views	True

Sizes

Floor Size	61m²
------------	------