

NEW



Soti Christodoulou
072 311 8662
soti.christodoulou@harcourts.co.za

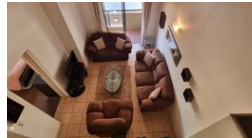
Contact Harcourts Capital

012 4604444

46 13th Street
Menlo Park
Pretoria
0081



Web Ref RL49032



R1,800,000

2 2 2

Monthly Bond Repayment R17,970.84

Calculated over 20 years at 10.5% with no deposit.

Transfer Costs R61,141.00 **Bond Costs** R30,875.00

These calculations are only a guide. Please ask your conveyancer for exact calculations.

Monthly Levy R3,264 **Monthly Rates** R900

Exquisite & very spacious!

Located between the sporting grounds, medical center and the main campus of the University of Pretoria.

Neat as a pin, the unit offers 2 bedrooms - main en suite, a large loft study area, open plan kitchen and lounge leading to an open balcony.

Double lock up garage plus an open parking bay.

Furniture & electrical appliances optional.

Well managed complex well located!

See to believe!

Features

Interior

Bedrooms	2
Bathrooms	2
Kitchens	1
Recep. Rooms	1
Studies	1
Furnished	No

Exterior

Garages	2
Carports / Parkings	1
Security	Yes
Pool	No
Views	False

Sizes

Floor Size	132m²
------------	-------