



**Soti Christodoulou**  
072 311 8662  
soti.christodoulou@harcourts.co.za

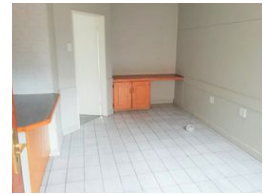
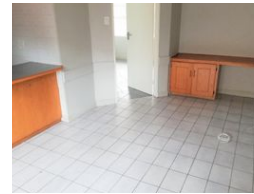
Contact Harcourts Capital

012 4604444

46 13th Street  
Menlo Park  
Pretoria  
0081



Web Ref NPP66929



R750,000



**Monthly Bond Repayment** R7,741.41  
Calculated over 20 years at 11% with no deposit.

**Transfer Costs** R25,898.00    **Bond Costs** R19,565.00  
These calculations are only a guide. Please ask your conveyancer for exact calculations.

**Monthly Rates** R350    **Sectional Title Levy** R1,521

Cosy one bedroom unit in the heart of Hatfield.

The unit offers open plan kitchen with white melamine cupboards, lounge and north facing en-suite bedroom. Fully tiled and all in good condition!  
High rental income. Small complex located near shops, transport and main campus of UP. Well managed complex.  
A good BUY and more!

The lovely, sedate neighbourhood of Hatfield has become known as the embassy suburb because of the inclination of embassies to move into the large homes that grace the area, which does in turn give one an indication of their size. Hatfield lies in the heart of Pretoria, just outside the city center between Arcadia and Lynnwood. Hatfield is close to the University, to Loftus Versfeld stadium, and the Hatfield Plaza with its shops and entertainment. Pretoria Central is only about 5 kilometres from Hatfield with easy access to main routes, buses and the...

### Features

Interior		Exterior		Sizes	
Bedrooms	1	Carports / Parkings	1	Floor Size	41m <sup>2</sup>
Bathrooms	1	Security	Yes		
Kitchens	1	Pool	No		
Recep. Rooms	1	Views	True		
Furnished	No				

### Extras

Built In Braai Patio Security Gate Unit Style: Highrise Views: Private Locality: Close To Schools  
Locality: Close To Shops Locality: Close To Transport Living Area: Open Plan Kitchen: Original  
Kitchen: Open Plan Kitchen: Microwave Kitchen: Free Standing Stove Kitchen: Finish Kitchen  
Finish: Melamine Main Bedroom: Double Main Bedroom: Built-in-robe Ensuite: Bath Laundry: In  
Kitchen Outdoor Living: Entertainment Area Outdoor Living Entertainment Area: Uncovered  
Outdoor Living Entertainment Area: Paved Land Contour: Flat Condition: Good

