



Soti Christodoulou
072 311 8662
soti.christodoulou@harcourts.co.za

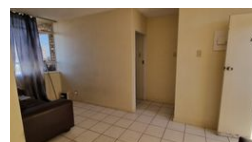
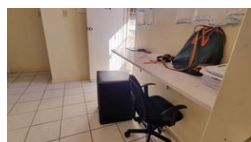
Contact Harcourts Capital

012 4604444

46 13th Street
Menlo Park
Pretoria
0081



Web Ref NPP68625



R650,000

2 1

Monthly Bond Repayment R6,489.47

Calculated over 20 years at 10.5% with no deposit.

Transfer Costs R23,709.00 **Bond Costs** R17,680.00

These calculations are only a guide. Please ask your conveyancer for exact calculations.

Monthly Levy R1,373 **Monthly Rates** R470

Great Reduction & Well Below Market Value...

Very large and well appointed one bedroom unit divided nicely into a two bedroom. Popular complex close to UP main campus & shops. Well managed with 24 hour security, extra visitors parking and in good condition.

Very well priced! Vacant Occupation.

Worth seeing...Worth buying.

Interested?

The lovely, sedate neighbourhood of Hatfield has become known as the embassy suburb because of the inclination of embassies to move into the large homes that grace the area, which does in turn give one an indication of their size. Hatfield lies in the heart of Pretoria, just outside the city center between Arcadia and Lynnwood. Hatfield is close to the University, to Loftus Versfeld stadium, and the Hatfield Plaza with its shops and entertainment. Pretoria Central is only about 5 kilometres from Hatfield with easy access to main routes,...

Features

Interior

| | |
|--------------|----|
| Bedrooms | 2 |
| Bathrooms | 1 |
| Kitchens | 1 |
| Recep. Rooms | 2 |
| Furnished | No |

Exterior

| | |
|---------------------|------|
| Carports / Parkings | 1 |
| Security | Yes |
| Pool | No |
| Views | True |

Sizes

| | |
|------------|------------------|
| Floor Size | 48m ² |
|------------|------------------|

Extras

Security Gate Unit Style: Highrise Views: City Locality: Close To Schools Locality: Close To Shops Locality: Close To Transport Living Area: Open Plan Kitchen: Original Kitchen: Open Plan Kitchen: Free Standing Stove Kitchen: Finish Kitchen Finish: Melamine Main Bedroom: Double Main Bedroom: Built-in-robe Bedroom 2: Single Bedroom 2: Built-in / Wardrobe Main Bathroom: Bath Main Bathroom: Shower Over Bath Laundry: In Bathroom Additional: Electrical Satellite Dish Outdoor Living: Garden Land Contour: Flat Condition: Good Security: Electric Fencing

