



**Soti Christodoulou**  
072 311 8662  
soti.christodoulou@harcourts.co.za

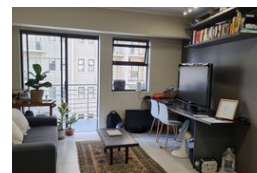
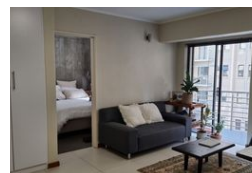
Contact Harcourts Capital

012 4604444

46 13th Street  
Menlo Park  
Pretoria  
0081



Web Ref NPP68382



### R1,150,000

2 2

**Monthly Bond Repayment** R11,675.13

Calculated over 20 years at 10.75% with no deposit.

**Transfer Costs** R32,749.00 **Bond Costs** R25,220.00

These calculations are only a guide. Please ask your conveyancer for exact calculations.

**Monthly Levy** R1,642 **Monthly Rates** R865 **Sectional Title Levy** R1,311

Price Cut To The Bone!

Immaculate 2 bedroom, 2 bathroom (both en-suite), plus double covered parking. The unit also offers an open plan fabulous kitchen and spacious lounge leading to an open balcony. The complex was recently built and offers 24 hour security, caretaker office, restaurant and laundry room. Come and see, come & sign! Available immediately!

The lovely, sedate neighbourhood of Hatfield has become known as the embassy suburb because of the inclination of embassies to move into the large homes that grace the area, which does in turn give one an indication of their size. Hatfield lies in the heart of Pretoria, just outside the city center between Arcadia and Lynnwood. Hatfield is close to the University, to Loftus Versfeld stadium, and the Hatfield Plaza with its shops and entertainment. Pretoria Central is only about 5 kilometres from...

### Features

#### Interior

Bedrooms	2
Bathrooms	2
Kitchens	1
Furnished	No

#### Exterior

Carports / Parkings	2
Security	Yes
Pool	No
Views	True

#### Sizes

Floor Size	57m <sup>2</sup>
------------	------------------

#### Extras

Extractor Fan Alarm System Security Gate Unit Style: Highrise Views: City Views: Urban  
Locality: Close To Schools Locality: Close To Shops Locality: Close To Transport Living Area:  
Open Plan Kitchen: Designer Kitchen: Modern Kitchen: Original Kitchen: Open Plan Kitchen:  
Double Sink Kitchen: Microwave Kitchen: Pantry Kitchen: Separate Cooktop Kitchen: Finish  
Kitchen Finish: Timber Main Bedroom: Double Main Bedroom: Built-in-robe Ensuite: Separate  
Shower Bedroom 2: Single Bedroom 2: Built-in / Wardrobe Main Bathroom: Bath Laundry: In  
Kitchen Additional Rooms: Guest Toilet Additional: Electrical Satellite Dish Outdoor Living:  
Entertainment Area Outdoor Living Entertainment Area: Covered Outdoor Living: Garden Land  
Contour: Flat To Sloping Condition: Excellent Window/door Frames: Aluminium Security:  
Electric Fencing



<https://capital.harcourts.co.za>