



Erwin van der Westhuizen
083 741 9064
erwin.vdwesthuizen@harcourts.co.za

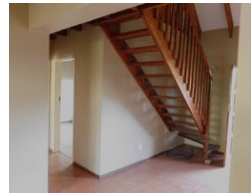
Contact Harcourts Capital

012 4604444

46 13th Street
Menlo Park
Pretoria
0081



Web Ref RL34719



R960,000



Monthly Bond Repayment R9,909.01
Calculated over 20 years at 11% with no deposit.

Transfer Costs R30,412.00 **Bond Costs** R23,335.00

These calculations are only a guide. Please ask your conveyancer for exact calculations.

Monthly Levy R2,200 **Monthly Rates** R700

In Vleioerie Complex -Reduced

Excellent value for money and immediately available to the qualified buyer.

The garden has shady trees with under-cover parking at the garden gate. The complex offers a 24hr controlled entrance, Wi-Fi connection, water tanks for those emergencies as well as peaceful and quiet living. Close to all amenities for instance: 3 shopping centres, the Gautrain Hatfield Station, excellent schools and public transport. The unit will be repainted to your choice of colour and a new oven to be installed. Give yourself a x-mas gift. Available for viewing in December.

Features

| | | | | |
|---------------------|-----|---------------------|-------|-------------------|
| Pets Allowed | Yes | | | |
| Interior | | Exterior | | Sizes |
| Bedrooms | 2 | Carports / Parkings | 2 | Floor Size |
| Bathrooms | 1 | Security | Yes | 114m ² |
| Kitchens | 1 | Pool | No | |
| Recep. Rooms | 1 | Views | False | |
| Studies | 1 | | | |
| Furnished | No | | | |