



**Erwin van der Westhuizen**  
083 741 9064  
erwin.vdwesthuizen@harcourts.co.za

Contact Harcourts Capital

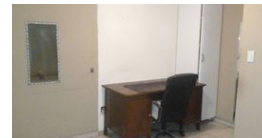
012 4604444

46 13th Street  
Menlo Park  
Pretoria  
0081



SOLE MANDATE

Web Ref RL43299



R860,000

2 2.5 2

**Monthly Bond Repayment** R8,730.97

Calculated over 20 years at 10.75% with no deposit.

**Transfer Costs** R28,244.00 **Bond Costs** R21,450.00

These calculations are only a guide. Please ask your conveyancer for exact calculations.

**Monthly Levy** R2,276 **Monthly Rates** R480

### Spacious Corner Unit

Generously sized 2-bedroom, 2.5-bathroom unit featuring a private side garden and a covered patio complete with a built-in braai. The expansive family kitchen offers plenty of storage space. Enjoy the tranquility of a peaceful neighborhood.

### Features

**Pets Allowed** Yes

#### Interior

Bedrooms	2
Bathrooms	2.5
Kitchens	1
Recep. Rooms	1
Furnished	No

#### Exterior

Garages	2
Security	No
Pool	No
Views	False

#### Sizes

Floor Size	98m²
------------	------