



Magda Boshoff
084 637 1597
magda.boshoff@harcourts.co.za

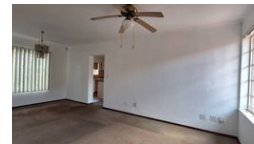
Contact Harcourts Capital

012 4604444

46 13th Street
Menlo Park
Pretoria
0081



Web Ref RL36437



R1,695,000

3 2 2

Monthly Bond Repayment R17,495.59
Calculated over 20 years at 11% with no deposit.

Transfer Costs R64,400.00 **Bond Costs** R36,112.50

These calculations are only a guide. Please ask your conveyancer for exact calculations.

Monthly Rates R1,200

Stunning Startup Home

Lovely Home to call your own...

Start up or scale down dream - with 3 bedrooms (Master and full en-suite) is downstairs.
In a hidden corner of Lynnwood Ridge close to major routes and shopping centres.

Easy to maintain garden, face-brick house, double motorized garage, and a surveillance camera system.

With a little TLC you can make this home your own.

Secure area - only the residents use this hidden from the Main Road street.

Features

Pets Allowed Yes

Interior

Bedrooms	3
Bathrooms	2
Kitchens	1
Recep. Rooms	2
Furnished	No

Exterior

Garages	2
Carports / Parkings	2
Security	Yes
Pool	No
Views	False

Sizes

Land Size	277m ²
-----------	-------------------