



**Simoné Pienaar**  
082 562 2245  
simone.pienaar@harcourts.co.za

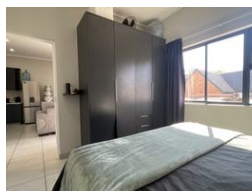
Contact Harcourts Capital

012 4604444

46 13th Street  
Menlo Park  
Pretoria  
0081



Web Ref RL46322



**R1,220,000**



**Monthly Bond Repayment** R12,385.79

Calculated over 20 years at 10.75% with no deposit.

**Transfer Costs** R35,217.00 **Bond Costs** R27,105.00

These calculations are only a guide. Please ask your conveyancer for exact calculations.

**Monthly Levy** R1,256 **Monthly Rates** R422

Hassle-free living

Are you looking for a modern apartment where you'd feel safe?  
Stop and watch this video.  
These apartments offer a outdoor braai area and an gym.  
The water and electricity are prepaid. Levies and rates are very low.  
Don't hesitate to give me a call to arrange a viewing.

### Features

#### Interior

|              |    |
|--------------|----|
| Bedrooms     | 1  |
| Bathrooms    | 1  |
| Kitchens     | 1  |
| Recep. Rooms | 1  |
| Furnished    | No |

#### Exterior

|                     |       |
|---------------------|-------|
| Garages             | 1     |
| Carports / Parkings | 4     |
| Security            | Yes   |
| Pool                | No    |
| Views               | False |

#### Sizes

|            |                  |
|------------|------------------|
| Floor Size | 42m <sup>2</sup> |
|------------|------------------|

#### Extras

Blinds Communal Braai Area Double Bed Security Complex