



Mary Merton
081 207 8917
mary.merton@harcourts.co.za



Edward Hamer
084 533 9807

edward.hamer@harcourts.co.za

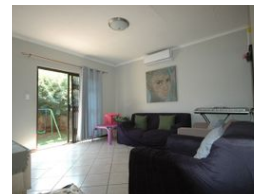
Contact Harcourts Capital

012 4604444

46 13th Street
Menlo Park
Pretoria
0081



Web Ref RL40847



R1,050,000

🛏️ 2 🚿 1 🚗 1

Monthly Bond Repayment R10,659.90

Calculated over 20 years at 10.75% with no deposit.

Transfer Costs R32,749.00 **Bond Costs** R25,220.00

These calculations are only a guide. Please ask your conveyancer for exact calculations.

Monthly Levy R3,600 **Monthly Rates** R574

Country Living at it's Best

Welcome to this exquisite 2-bedroom simplex nestled in the highly coveted Country View Estate in Pretoria. This delightful property offers an incredible combination of comfort, security, and a warm atmosphere, making it an ideal choice for families, couples, or anyone looking for a peaceful lifestyle in one of Pretoria's most desirable neighborhoods.

As you step inside, you'll be greeted by a cozy living area, striking the perfect balance between elegance and comfort. The carefully crafted layout optimizes space and functionality, creating an inviting environment for both relaxation and entertaining. The open-plan living space flows gracefully into a well-equipped kitchen, perfect for all your culinary adventures. Venture outside to a generous garden, a true sanctuary. Your safety is a top priority, and this property provides...

Features

Pets Allowed	Yes				
Interior		Exterior		Sizes	
Bedrooms	2	Garages	1	Floor Size	86m²
Bathrooms	1	Carports / Parkings	1		
Kitchens	1	Security	Yes		
Recep. Rooms	2	Pool	No		
Furnished	No	Views	False		