



Magda Boshoff
084 637 1597
magda.boshoff@harcourts.co.za



Karin Tengstrom
072 800 9887

karin.tengstrom@harcourts.co.za

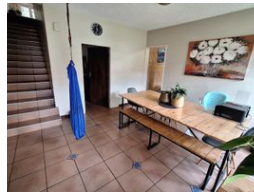
Contact Harcourts Capital

012 4604444

46 13th Street
Menlo Park
Pretoria
0081



Web Ref RL36683



R1,199,000

3 2 1

Monthly Bond Repayment R12,172.60

Calculated over 20 years at 10.75% with no deposit.

Transfer Costs R32,749.00 **Bond Costs** R25,220.00

These calculations are only a guide. Please ask your conveyancer for exact calculations.

Monthly Levy R3,165 **Monthly Rates** R905

Spacious Family sized Townhouse against the Mountain

Spacious, Secure, Renovated 3-bedroom home plus separate study.

Nestled against a mountain, on the border between Lynnwood Ridge and Murrayfield, this 170 sqm two-story offers a perfect family home, or Lock-up-and-go, combining space, comfort, style, and security.

Prime location promising serene living experience, while conveniently being close to all access routes, schools, the hospital, and shopping centers.

Property Features:

- * 3 spacious bedrooms
- * 1 Study / Home office
- * 2 renovated bathrooms
- * Wooden Kitchen - Separate laundry room and court yard.
- * Living room flowing onto patio -
- * Dining room on bottom floor
- * 1 garage - Outdoor patio.
- * Aluminium sliding doors to patio, flowing into the beautiful rocky mountains with mature trees providing a tranquil private setting, to breathe easy or

Features

Interior

Bedrooms	3
Bathrooms	2
Kitchens	1
Recep. Rooms	2
Studies	1
Furnished	No

Exterior

Garages	1
Carports / Parkings	1
Security	Yes
Pool	No
Views	True

Sizes

Floor Size	170m²
Land Size	12,900m²