



Soti Christodoulou

072 311 8662

soti.christodoulou@harcourts.co.za

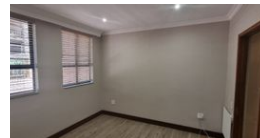
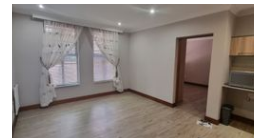
Contact Harcourts Capital

012 4604444

46 13th Street
Menlo Park
Pretoria
0081



Web Ref RL9121



R814,000



1



1

Monthly Bond Repayment R8,263.96

Calculated over 20 years at 10.75% with no deposit.

Transfer Costs R28,244.00 **Bond Costs** R21,450.00

These calculations are only a guide. Please ask your conveyancer for exact calculations.

Monthly Levy R2,482 **Monthly Rates** R107

Upmarket and very well sought after Retirement Village

Well located complex within easy access to main amenities, free-way and shopping malls.

The complex has a lot to offer such as

- 24 Hour security
- Restaurant
- Gym facility
- Laundry
- 24 Hour nurse on duty
- Library
- Hair salon
- Caretaker
- Administration office

This lovely one-bedroom ground unit is available immediately.

Move in or let out!

Features

Interior

Bedrooms	1
Bathrooms	1
Kitchens	1
Recep. Rooms	1
Furnished	No

Exterior

Security	Yes
Pool	No
Views	False

Sizes

Floor Size	38m ²
------------	------------------

