



Iola Heim
082 297 9182
iola.heim@harcourts.co.za

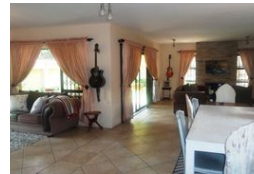
Contact Harcourts Capital

012 4604444

46 13th Street
Menlo Park
Pretoria
0081



Web Ref NPP73782



R2,750,000

Monthly Bond Repayment R27,918.80

Calculated over 20 years at 10.75% with no deposit.

Transfer Costs R137,887.00 **Bond Costs** R40,300.00

These calculations are only a guide. Please ask your conveyancer for exact calculations.

Monthly Rates R1,170

3 2 2

The perfect 3 bedroom lock up 'n go - Nieuw Muckleneuk

The house is designed to ensure a relaxed, comfortable lifestyle taking advantage of the spacious living areas and adequate accommodation. Uncluttered design distinguished by refinement and sleek sophistication with a modern, minimalistic open plan ambience. This perfect lock up and go is stylish, ticks all the boxes, has excellent embassy style security and an ideal, low maintenance smallish garden. Ideal for embassies.

Situated right in the middle of popular suburbs Waterkloof, Groenkloof, Lukasrand and Bailey's Muckleneuk this suburb boasts leafy, tree-lined streets and large properties. Close to the Gautrain Station in Hatfield and malls like Brooklyn Mall and Menlyn Park Shopping Mall plus smaller shopping centres. Top notch schools and bus routes are also located conveniently close to this suburb and access to main...

Features

Pets Allowed		Yes		
Interior			Exterior	
Bedrooms	3		Garages	2
Bathrooms	2		Security	Yes
Kitchens	1		Pool	No
Recep. Rooms	2		Views	True
Studies	1			
Furnished	No			
Sizes				
Floor Size		285m ²		
Land Size		590m ²		

Extras

Laundry Totally Fenced Extractor Fan Alarm System Security Gate Outdoor Beams Garaging / Carparking: Double Lock-up Living Area: Open Plan Kitchen: Scullery Main Bedroom: Double Main Bedroom: Walk-in-robe Ensuite: Spa Bath Ensuite: Separate Shower Bedroom 2: Double Bedroom 2: Built-in / Wardrobe Bedroom 3: Double Bedroom 3: Built-in / Wardrobe Main Bathroom: Bath Main Bathroom: Separate Shower Locality: Close To Schools Locality: Close To Shops Locality: Close To Transport Locality: Golf Estate House Style: Contemporary Views: Private Kitchen: Modern Kitchen: Open Plan Kitchen: Breakfast Bar Kitchen: Double Sink Kitchen: Finish Kitchen Finish: Granite Kitchen Finish: Timber Outdoor Living: Entertainment Area Outdoor Living Entertainment Area: Covered Outdoor Living: Garden Outdoor Living: Washing Line Land Contour: Flat Water Supply: Town Supply Sewerage: Mains Condition: Good Window/door Frames: Aluminium

