



Tamara Takacs-Windt
084 657 5386
tamara.tw@harcourts.co.za

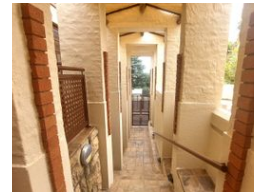
Contact Harcourts Capital

012 4604444

46 13th Street
Menlo Park
Pretoria
0081



Web Ref NPP74598



R4,990,000

5 3 2

Monthly Bond Repayment R49,819.16

Calculated over 20 years at 10.5% with no deposit.

Transfer Costs R401,416.00 **Bond Costs** R61,035.00

These calculations are only a guide. Please ask your conveyancer for exact calculations.

Monthly Rates R3,600

Super safety and security in controlled access road

Space glorious space..... enjoy the hub of activity and happiness that this family home has to offer. Your reception areas, kitchen and scullery, built in braai room and entertainments spaces are all on the ground level, with your comfortable sleeping quarters and bathrooms upstairs. An additional 5th bedroom en suite, is separate to the main house with its own entrance.

Security is tip top in terms of alarm system, electric fencing, electric gates and access controlled road all in place.

Plenty of space for your cars to "sleep" and should your domestic help want to sleep in, they can certainly be accommodated.

Do give me a call to chat about this beautiful home in further detail.

Waterkloof Park is one of the city's most prestigious and beautiful suburbs in Pretoria, South Africa. It is a popular area and...

Features

Pets Allowed Yes

Interior

Bedrooms	5
Bathrooms	3
Kitchens	1
Recep. Rooms	3
Studies	1
Furnished	No

Exterior

Garages	2
Security	Yes
Dom. Accom.	1
Pool	Yes
Views	True

Sizes

Floor Size	800m ²
Land Size	1,750m ²

Extras

TV Port Built In Braai Alarm System Security Gate House Style: Character House Style: Lifestyle Views: Private Locality: Close To Schools Locality: Close To Shops Locality: Close To Transport Living Area: Separate Dining Kitchen: Modern Kitchen: Standard Kitchen: Separate Kitchen: Dishwasher Kitchen: Double Sink Kitchen: Microwave Kitchen: Pantry Kitchen: Scullery Kitchen: Finish Kitchen Finish: Granite Main Bedroom: Double Main Bedroom: Built-in-robe Main Bedroom: Walk-in-robe Ensuite: Bath Ensuite: Separate Shower Bedroom 2: Double Bedroom 2: Built-in / Wardrobe Bedroom 3: Double Bedroom 3: Built-in / Wardrobe Bedroom 4: Double Bedroom 4: Built-in / Wardrobe Main Bathroom: Bath Main Bathroom: Shower Over Bath Laundry: In Kitchen Additional Rooms: Family Additional Rooms: Guest Toilet Window Coverings: Drapes Window Coverings: Blinds Heating / Cooling: Split Cycle A/c Outdoor Living Braai Area: Lighting Outdoor Living Braai Area: Power Outdoor Living: Entertainment Area Outdoor Living: Garden Outdoor Living: Washing Line Pool: Chlorine Pool: Inground Pool: Private Garaging / Carparking: Double Lock-up Land Contour: Flat To Sloping Condition: Good Window/door Frames: Timber Security: Electric Fencing Security: Intercom



<https://capital.harcourts.co.za>