

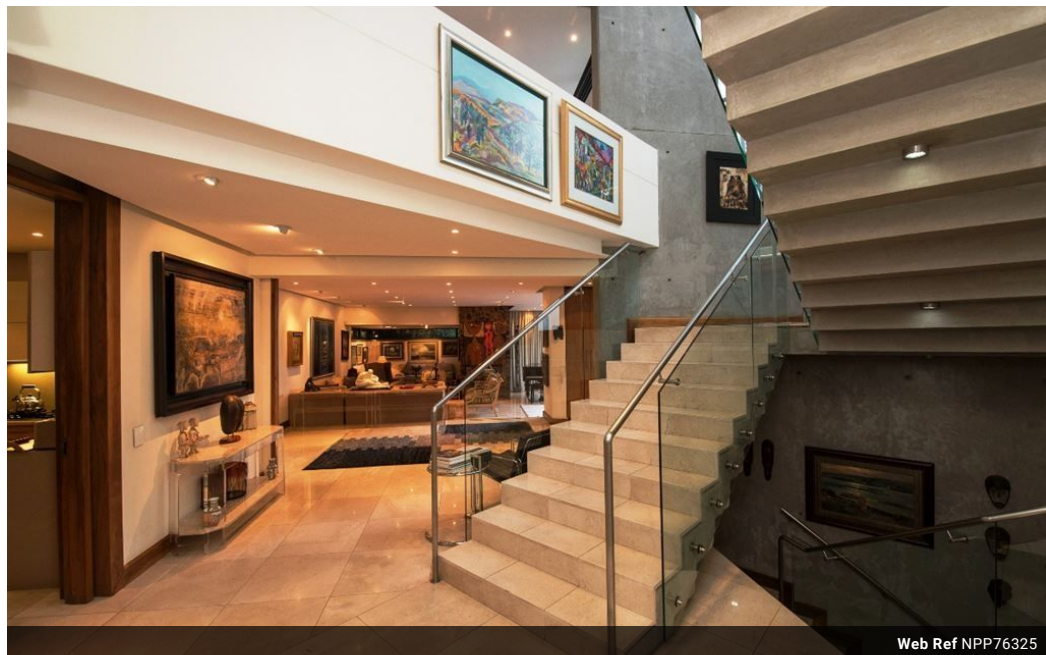


Iola Heim
082 297 9182
iola.heim@harcourts.co.za

Contact Harcourts Capital

012 4604444

46 13th Street
Menlo Park
Pretoria
0081



Web Ref NPP76325



R25,000,000

Monthly Bond Repayment R258,047.10
Calculated over 20 years at 11% with no deposit.

Transfer Costs R2,922,371.00 **Bond Costs** R132,285.00
These calculations are only a guide. Please ask your conveyancer for exact calculations.

Monthly Rates R2,600



An Embodiment of Understated, Harmonious Design

A masterpiece by the Architect Eftychios Eftychis. The architectural design is bespoke ... minimalistic, clean lines of glass, aluminium and smooth plaster. The imaginative use of large glazed walls ensures light, sun-drenched rooms. The materials of the design are kept in their raw state, embodying the principals of the understated design ... simplicity and purism. A feature of the house is the double volume and open plan which invites natural elements into the home space, and creates an excellent flow between the indoor and outdoor areas, creating an easy lifestyle whilst taking in and capturing the beautiful views. The house offers spacious and luxuriously appointed bedrooms, all having bathrooms en-suite, a gourmet Woodpecker kitchen with top of the range Miele and Gaggenau built-in appliances, a walk-in cold room, a...

Features

Interior		Exterior		Sizes	
Bedrooms	6	Garages	6	Floor Size	1,100m ²
Bathrooms	6	Security	No	Land Size	3,103m ²
Kitchens	1	Pool	Yes		
Recep. Rooms	5	Views	True		
Studies	1				
Furnished	No				

Extras

Extractor Fan Under Floor Heating Built In Braai Patio House Style: Executive Views: City Locality: Close To Schools Locality: Close To Shops Locality: Golf Estate Living Area: Formal Dining Living Area: Formal Lounge Living Area: Open Plan Kitchen: Designer Kitchen: Modern Kitchen: Open Plan Kitchen: Separate Kitchen: Breakfast Bar Kitchen: Dishwasher Kitchen: Double Sink Kitchen: Microwave Kitchen: Separate Cooktop Kitchen: Scullery Kitchen: Waste Disposal Kitchen: Finish Kitchen Finish: Granite Kitchen Finish: Other Main Bedroom: Double Main Bedroom: Walk-in-robe Ensuite: Bath Ensuite: Separate Shower Bedroom 2: Double Bedroom 2: Built-in / Wardrobe Bedroom 2: Additional Info Bedroom 3: Double Bedroom 3: Built-in / Wardrobe Bedroom 3: Additional Info Bedroom 4: Double Bedroom 4: Built-in / Wardrobe Bedroom 4: Additional Info Additional Rooms: Family Additional Rooms: Office / Study Additional Rooms: Games / Play Room Additional Rooms: Guest Toilet Additional Rooms: Other Window Coverings: Drapes Window Coverings: Blinds Heating / Cooling: Other Outdoor Living: Entertainment Area Outdoor Living Entertainment Area: Covered Outdoor Living: Garden Pool: Above Ground Pool: Chlorine Garaging / Carparking: Auto Doors Land Contour: Steep Condition: Excellent Window/door Frames: Aluminium Water Supply: Town Supply Sewerage: Mains Bedroom 5: Double Bedroom 5: Additional Info Bedroom 6: Double Bedroom 6: Additional Info Bedroom 7: Double Bedroom 7: Additional Info Lifts

