



**Simoné Pienaar**  
082 562 2245  
simone.pienaar@harcourts.co.za



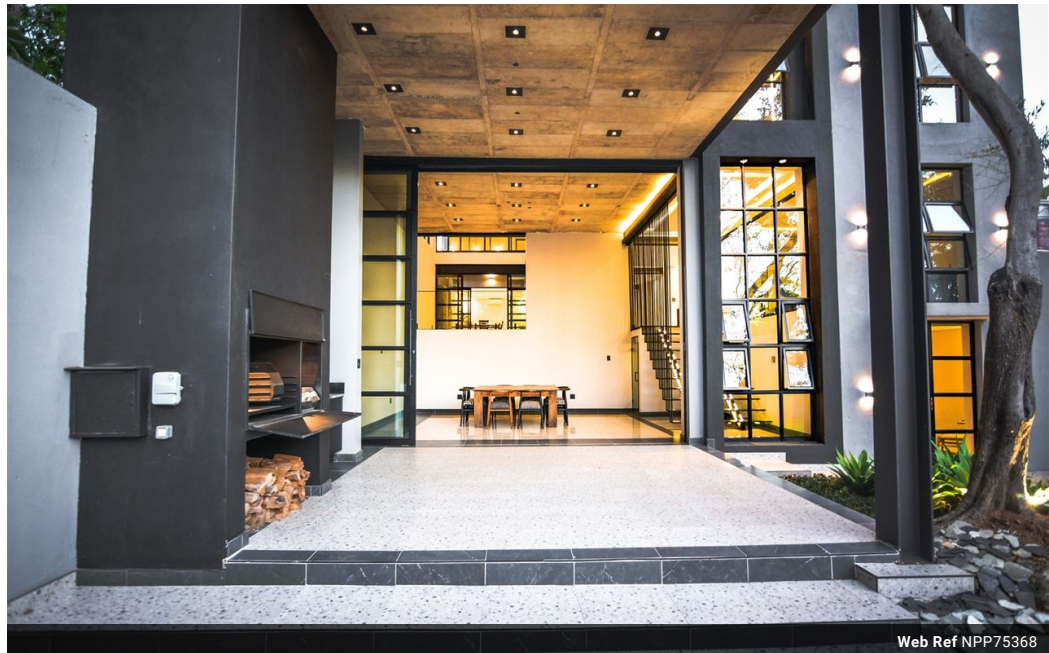
**Dennis Hamer**  
082 415 8547

dennis.h@harcourts.co.za

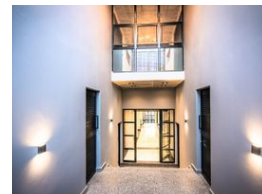
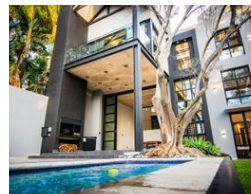
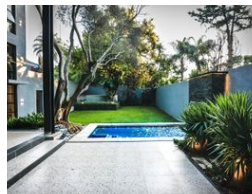
Contact Harcourts Capital

012 4604444

46 13th Street  
Menlo Park  
Pretoria  
0081



Web Ref NPP75368



R17,500,000

**Monthly Bond Repayment** R174,716.48

Calculated over 20 years at 10.5% with no deposit.

**Transfer Costs** R1,931,439.00 **Bond Costs** R118,035.00

These calculations are only a guide. Please ask your conveyancer for exact calculations.

**Monthly Rates** R3,000



6



6



4

### SAFE Waterkloof - Your Own Slice of Paradise

Wandering around this house feels like trawling the globe, from a bubble palace above the "Bay of Cannes", touch and explore the high-tech of a "Silicon Valley", walk under the lights of the "San Francisco's Bay Bridge", slowly pass the waterways of a "Florence", stop to "Tie a Yellow Ribbon Round the Ole Oak Tree", to a boma in the South African dessert. Walking from one room to another, looking at each one.

A little bit of Italy, the floor and wall tiling and the construction, the Miele appliances in the kitchen, including a coffee machine and microwave, Hansgrohe appliances with heated towel rails in all the bathrooms, reminds you of Germany.

A little bit of Alaska, the images on the tiling and the warmth that one could only experience inside an igloo. A little bit of China, the spa bath, you could easily imagine a duck...

### Features

#### Interior

Bedrooms	6
Bathrooms	6
Kitchens	1
Recep. Rooms	3
Studies	1
Furnished	No

#### Exterior

Garages	4
Security	No
Dom. Accom.	1
Pool	Yes
Views	True

#### Sizes

Floor Size	763m <sup>2</sup>
Land Size	1,007m <sup>2</sup>

#### Extras

Laundry House Style: Art Deco Views: Private Locality: Close To Schools Locality: Close To Shops Kitchen: Modern Kitchen: Open Plan Kitchen: Double Sink Kitchen: Gas Bottled Kitchen: Microwave Kitchen: Pantry Kitchen: Separate Cooktop Kitchen: Scullery Kitchen: Under Counter Oven Kitchen: Finish Kitchen Finish: Granite Main Bedroom: Double Main Bedroom: Walk-in-robe Ensuite: Spa Bath Ensuite: Separate Shower Bedroom 2: Double Bedroom 2: Built-in / Wardrobe Bedroom 3: Double Bedroom 3: Built-in / Wardrobe Bedroom 4: Double Bedroom 4: Built-in / Wardrobe Main Bathroom: Bath Main Bathroom: Separate Shower Laundry: In Kitchen Additional Rooms: Office / Study Additional Rooms: Guest Toilet Insulation: Walls Heating / Cooling: Electric Outdoor Living: Entertainment Area Outdoor Living Entertainment Area: Covered Outdoor Living Entertainment Area: Paved Outdoor Living: Washing Line Pool: Chlorine Pool: Inground Garaging / Carparking: Double Lock-up Land Contour: Flat Window/door Frames: Aluminium Sewerage: Mains Living Area: Formal Dining Living Area: Formal Lounge Living Area: Open Plan Heating / Cooling: Woodfire Heating / Cooling: Closed Condition: New Water Supply: Town Supply Condition: Excellent Bedroom 4: Additional Info



<https://capital.harcourts.co.za>